



Survey to determine the state  
of preparedness for the winter  
season of PwD and OP



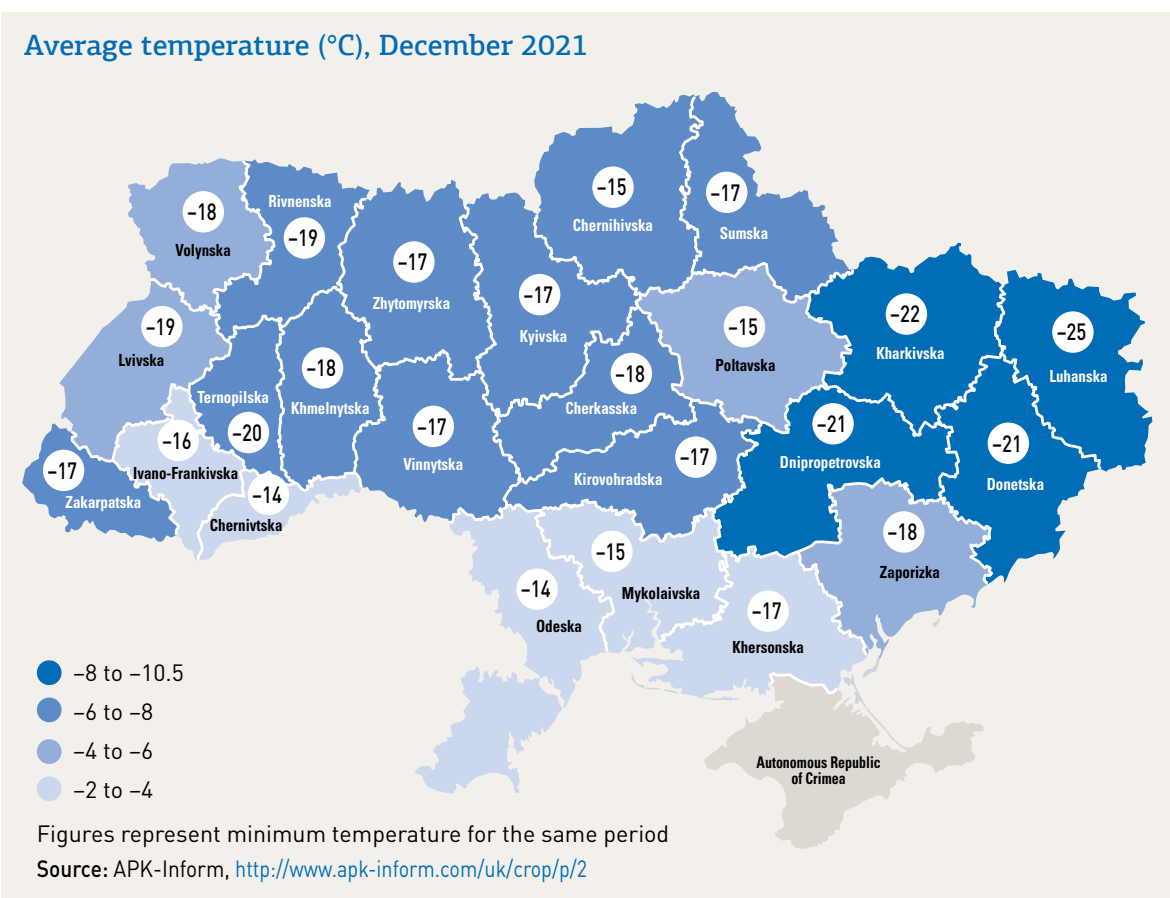
## Contents

CONTEXT.....	3
OBJECTIVE OF THE ASSESSMENT .....	4
ASSESSMENT METHOD AND PARTICIPANTS.....	4
MAIN FINDINGS .....	4
Demographics .....	4
Disability .....	5
Types of Disability.....	5
Access to services .....	6
Needs for the winter .....	6
Winter Preparedness .....	7
BRIEF SUMMARY .....	9
RECOMMENDATIONS .....	9

## Context:

The winter season is approaching fast, while older people (OP) and people with disabilities (PwD) have already been living in the harsh environment of a full-scale war for eight months, with their basic needs and human rights at risk of being neglected and violated for eight years of ongoing war.

The recent brutal attacks on the critical infrastructure facilities such as power plants and power substations in eight regions of Ukraine, including Kyiv<sup>1</sup>, show the alarming prediction that this winter is going to be challenging for the affected areas, especially for the vulnerable people residing there. As the winter temperature is predicted to plummet as low as – 20 degrees Celsius in parts of the country and remain for several months, with the severe impact felt by millions living in sub-standard conditions or without sufficient personal insulation or access to heating<sup>2</sup>.



Amid the lack of recent information on the specific needs of OP and PwD, ADTWG with the technical expertise and support of the National Assembly of People with Disabilities of Ukraine (NAPD) and HelpAge International advocated for the idea to amplify the voice of OP and PwD themselves as the experts on their own needs. This will also serve to strengthen their rights and safeguard their dignity as humanitarian agencies develop and implement their plans for the approaching winter.

<sup>1</sup> <https://reliefweb.int/report/ukraine/russian-attacks-kyiv-and-cities-across-ukraine-are-escalation-aggression-and-apparent-violations-laws-war>

<sup>2</sup> <https://reliefweb.int/report/ukraine/ukraine-winterization-plan-winter-priority-procurement-repair-plan-2022-2023>



## Objective of the Assessment:

- To conduct a winterisation assessment by gathering information from OP and PwD in Ukraine, identifying the specific needs of PwD and OP in preparing for winter and listening to their concerns and opinions;
- To identify challenges faced by the respondents regarding the upcoming winter and their preparedness;
- To build on the information from the assessment carried out by the **ADTWG**, with **NAPD** and **HelpAge**, to influence the design and preparation for the 2022-2023 winter season;
- To inform the humanitarian actors on the outcomes in order to plan their programmes and implement them accordingly based on the needs addressed directly from OP and PwD.

## Assessment Method and Participants:

The target population of the survey were OP & PwD, living in their own homes where they also plan to spend this winter season and therefore in need to prepare for the cold season. The assessment did not collect data from people staying in collective centres.

The survey was conducted during in-person meetings with respondents, or over the phone using a Google-form, during **September 2022** covering **2,978** respondents all over Ukraine. The respondents were from two categories, **older people (60+)** and **persons with disabilities** from all over Ukraine. HelpAge volunteers and social workers had access to older people linked to their project activities, and the members of the NAPD and their partner organisations (OPWD) also provided information on persons with disabilities.

The results of the assessment are presented in the form of the Power BI interactive visualisation and exists in English and Ukrainian.



<https://app.powerbi.com/view?r=eyJrljoiNTVhZTMzNzctMDkyYS00MmExLTliMmItNzQyMDVjMTU5NjcwliwidCI6ImQ4NmM1M2NhLWUwODctNGY5Ny05Yzk3LWVmYWJkMTFkMDI4MjI4MmMiOj9>

This platform allows the user to search for specific data by using different filters, such as gender, disability and type of disability, age, location, displacement, access to services, accommodation, bomb shelter, winter concerns, winter preparedness, heating, and needs.

## Main Findings:

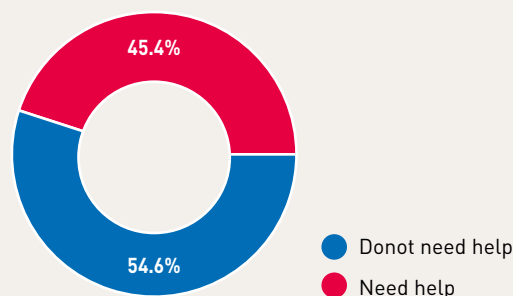
### Demographics

- 42% of the respondents were from 60-69 y.o. cohort, 27% aged 70-79, and 67% were females;
- 34% live alone without family;
- 86% do not work and have no additional income.

## Disability

- 35% reported a disability, using the Washington Group Short Set on Functioning (WG-SS);
- Also, 4% have Group 1, Subgroup B of disability, 5% – Group 1, Subgroup A, 9% – Group 2, and 18% – Group 3<sup>3</sup>;
- 45% stated they need help.

### How independent are you?



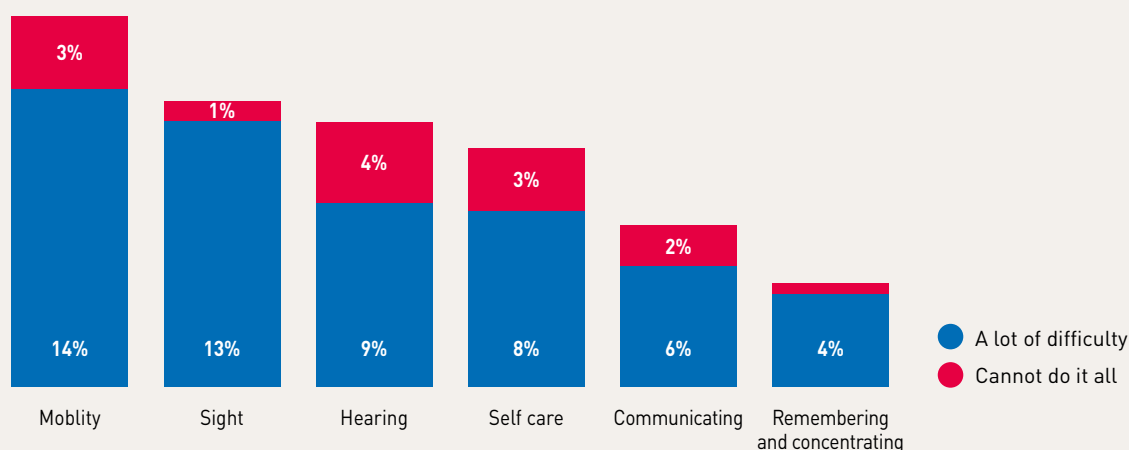
## Types of Disability

There are many issues related to disability – especially mobility and sight:

- 14% have a lot of difficulty walking and 3% cannot walk at all;
- 13% have a lot of difficulty seeing.

The graph below highlights the different disabilities that people are living with in their community and raises the concern that the support to meet their needs during the winter needs to be accessible to meet their multiple challenges. The figures represent a very complex and dire set of concerns that need to be considered in winterisation planning to ensure specific attention is paid to older people and people with disabilities, with increased costs due to their disability and age-related needs.

### Types of disability according to the Washington Group Short Set on Functioning (WG-SS)



<sup>3</sup> Depending on the degree of persistent disorder of the functions of the body, which are caused by disease, trauma (its consequences) or congenital impairments, and the possible disability when interacting with the external environment as a result of health loss, a person recognized as a person with a disability is assigned the first, second or third group of disability.

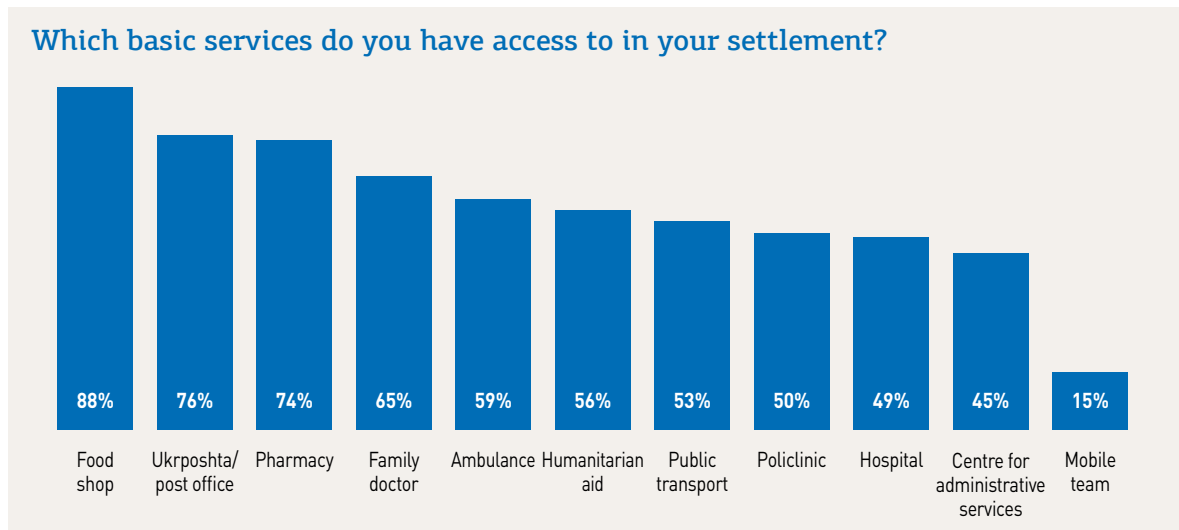
Group 1 of disability is divided into subgroups A and B depending on the health loss degree of a PwD and the amount of needed permanent external care, assistance or dispensary care.

Subgroup A of Group 1 of disability includes persons with an exceptionally high degree of health loss, extreme dependence on constant third-party care, assistance or dispensary care of other persons and who are actually incapable of self-care.

Subgroup B of Group 1 of disability includes persons with a high degree of health loss, significant dependence on other persons in provision of vital social and household functions, and who are partially capable of performing certain elements of self-care.

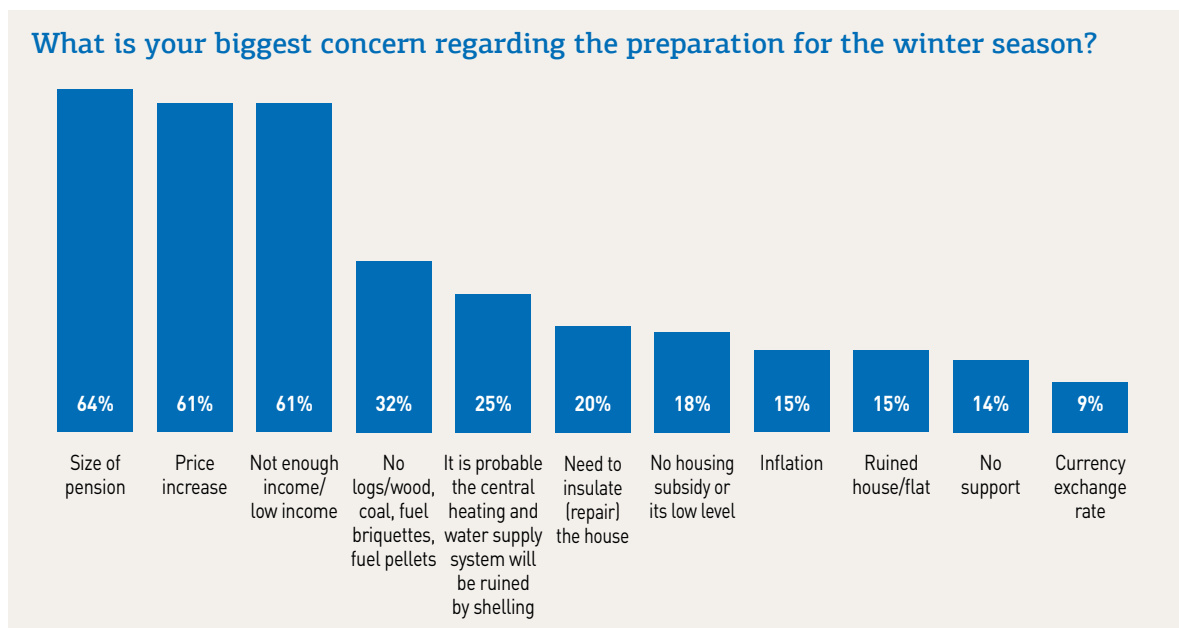
<https://zakon.rada.gov.ua/laws/show/2961-15#Text>

## Access to services



## Needs for the winter

- The **biggest winter concerns for 64% of older people and persons with disabilities** is the **inadequate amount of pensions/social benefits to meet their basic needs**, with 61% concerned with price increases and insufficient/low income, which makes their future planning for winter impossible to achieve;
- The figures worsen if you select the most vulnerable groups, for example PwD aged 60+;
- Also, **15% reported their homes destroyed**;
- And **14% have no support at all**.

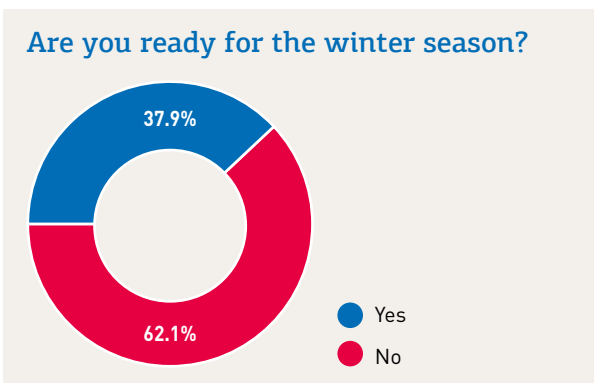


The situation is especially troubling for older people, who face greater health risks associated with the onset of colder weather<sup>4</sup>. Many older people in Ukraine lack the financial resources to make the repairs or improvements necessary to their damaged homes or to buy the items they need to survive the cold<sup>5</sup>. Older people living in informal, and unvetted sources of shelter face potential safety and security risks associated with sub-standard accommodation, which may be exacerbated by the winter weather<sup>6</sup>. For those older people living in rural areas, they will likely need to travel to towns and cities and face long queues to access fuel or cash. Access to social entitlements and freedom of movement for older people who chose or had to remain in the east and southern regions<sup>7</sup>, particularly those living in non-government-controlled areas, including the newly annexed areas of eastern Ukraine, remains of particular concern.

## Winter Preparedness

For many OP & PwD the impending winter becomes a rush against time. Especially for those whose houses and flats sustained damages (12% – totally destroyed, 32% – partially destroyed) or will be ruined in the near future.

- Only **38%** reported they are ready, and **62%** of respondents reported they are not ready for the winter season. This figure rises to **73.5%** in **rural areas**;
- **50%** said they purchased **warm clothes** and **46%** have **food and water in store** (this stock is partial for 70%) in order to prepare for winter;
- The level of preparedness drops when you select **Donetsk** or **Kherson** Oblasts to **18%** and **20%** respectively, in particular for **PwD aged 60+**;
- The respondents presented the following answers to the question: **‘What is your biggest concern regarding the preparation for the winter season?’**
  - Majority, **63%**, are concerned about the small amount of pensions.
  - For **62%**, it is the increase of prices.
  - **61%** are concerned about the lack of income.
  - **32%** are concerned about the absence of firewood.
  - **26%** are concerned about the possibility of the critical infrastructure being damaged.
  - For **20%** it is the need for insulation.
  - For **18.5%** the biggest concern is absence of housing subsidies.
  - **18.2%** are concerned with the need to purchase generators.



<sup>4</sup> <https://www.ageuk.org.uk/information-advice/health-wellbeing/keep-well-this-winter/stay-healthy-in-winter/>  
<https://www.ageuk.org.uk/lambeth/about-us/news/articles/2018/age-uk-urges-older-people-to-claim-help-with-heating-costs-as-more-heavy-snow-and-freezing-conditions-hit-the-uk/>

<sup>5</sup> <https://www.acaps.org/special-report/ukraine-winterisation-needs-and-response>

<sup>6</sup> <https://reliefweb.int/report/ukraine/ukraine-winterization-plan-winter-priority-procurement-repair-plan-2022-2023>

<sup>7</sup> <https://www.acaps.org/special-report/ukraine-winterisation-needs-and-response>

- The following are answers to the question: **‘Are you able to buy firewood, coal, fuel briquettes, fuel pellets?’**
  - **27%** have no opportunity to buy firewood.
  - **25%** not enough purchased firewood.
  - **3.3%** are able to purchase firewood, coal, fuel, briquettes, fuel pellets to heat their homes.
- The following answers were given to the question: **‘Do you have a stock of food and other necessities for the winter period?’**
  - **70%** have partial stock of food.
  - **11%** do not have a sufficient stock of food.
  - **18%** have enough food in stock and have no need for storing food.
- The question **‘What other needs do you have in terms of preparing for the winter period?’** (multiple choice question) was answered as follows:
  - **72%** specified they need cash assistance.
  - **62%** need medicines.
  - **59%** need food.
  - **54%** need hygiene products.
  - **45%** need blankets.
  - **40%** need clothes and shoes.
  - **35%** need firewood and heaters.
  - **26%** need coal.
  - **22%** need fuel briquettes.
- Some of the respondents answered the question **‘What other needs regarding the preparation for the winter season do you have’** (open-ended questions) as follows:
  - To repair the roofing; to repair the boiler; to repair the water pumping station.
  - To insulate the house.
  - To cut down trees and chop them for firewood.
  - Some external help<sup>8</sup>.
  - To buy pillows, bed linens, towels, mattresses.
  - To purchase a potbelly stove, electric stove, heaters, flashlights, candles.
  - To buy hexamine fuel tablets, petrol, chainsaw.

*“If there is no power or gas – nothing will help!”*

*“We have to choose bread or gas, medicines or power!”*

<sup>8</sup> External help can include the need of a person in the assistance form another person to do household work, namely, to chop firewood, carry water, go shopping, etc.



## Brief Summary:

- Target older people for cash assistance programmes to meet their basic needs, as When asked direct questions, **72%** of respondents stated that their need during the winter season is financial assistance;
- Other needs specified by the respondents were medicine – **62%**, food – **58%**, hygiene items – **53%**;
- Prioritise providing older people and people with disabilities with winter-specific aid items, such as thermal blankets, winter clothing, heating appliances and solid fuel (**from 22% to 45% of the respondents specified those needs**).

All objects of civilian infrastructure are still under the threat of shelling and destruction, which heightens the risks for OP & PwD in the coming months of winter. It is highly recommended to provide options for heating and provision of humanitarian assistance based on consultations with the OPWD and OOP, as well as the target communities.

## Recommendations:

- To revise the mechanisms, terms, and the amount of the cash assistance provision for people with disabilities (including children with disabilities) and older people; and to set the bigger size of such assistance for the specified categories of people in comparison to other categories, as well as the terms to be set so that they can cover the spring season. This to be done on the basis of consultations with OPWD and OOP.
- In addition to provision of cash assistance, there should be an opportunity to receive in-kind support (i.e. food, help with chopping firewood, repair works, insulation, etc.) for PwD (including children with disabilities) and OP, including by creating specialised mobile teams to help people with mobility issues who are living alone (it is particularly relevant for residents of remote urban settlements and families with several persons with disabilities (including children with disabilities) and/or older people aged 70+). It is recommended to actively engage volunteer, charity, and civil society organisations to such activities (with their consent).
- There is a need to develop a set of measures aimed at assisting households with PwD (including children with disabilities) and OP as they are particularly under threat of severe lack of power due to their low income, higher dependency on consumed power because of the usage of assistive technology, higher needs for heating because of health conditions, longer time spent indoors, etc.
- To include the needs of PwD (including children with disabilities) and /or OP when designing policies and budgets of humanitarian interventions, through consulting with PwD and OP.
- To prioritize families with PwD (including children with disabilities) and/or OP aged 70+ when implementing the government decision on provision of firewood, prioritize families with PwD and/or OP aged 70+<sup>9</sup>.
- To ensure the safety and security, accessibility and architectural accessibility, and transportation logistics of all the infrastructure for assistance provision for PwD and OP.

<sup>9</sup> <https://www.minre.gov.ua/news/meshkanci-osoblyvo-nebezpechnyh-terytoriy-mozhut-bezoplatno-otrymaty-drova-rishennya-uryadu>

- To provide regular consultations with communities on the targeted cash and in-kind assistance to OP & PwD (including children with disabilities).
- The final decision regarding the choice of option of assistance in preparation for the winter season, by all the parties of all levels (international, foreign, local, subnational, state, and local levels) should be made on the basis of consultations with the organisations that represent the interests of OP and PwD, and with the beneficiaries themselves.
- To include the representatives of OOP and OPWD into the humanitarian centres and other consultative and advisory bodies that deal with distribution of humanitarian and other assistance to people.
- To ensure the unified information portal is created and contains the full and actual information on all the types of cash and in-kind assistance, criteria, and terms, under which it is provided by international, foreign, national and local government bodies and entities.
- To provide for a mechanism to convey the relevant information to the people with low mobility, especially the residents of rural settlements, especially in remote areas, and for PwD (including children with disabilities) and/or OP who have limited access to the information and smartphones, and consequently have no access to the Internet or computers.<sup>10</sup>
- To provide information to PwD (including children with disabilities) and OP (on the types of assistance and how to get it, etc.) in the accessible formats (translation into sign language, audio script, Braille font and enlarged fonts, easy to read language) regarding the cash and in-kind assistance, criteria, and the actors distributing such assistance, etc.

<sup>10</sup> <https://naiu.org.ua/cash-feasibility-assessment-conducted-on-adult-internally-displaced-people-idps-with-disabilities-in-ukraine-in-may-june-2022-cash-feasibility-assessment-conducted-on-adult-internally-displaced-people/>



